

Comparing Quantities in Teddy's Toy Shop



Instructions



I love living in the toy shop –
there are so many different toys!
Can you help me compare the sets
of toys?

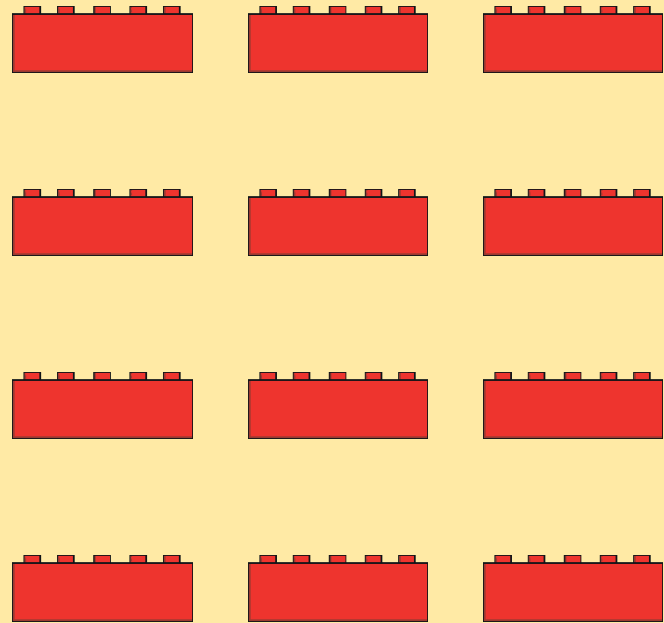
Which sets have **more**?

Which sets have **fewer**?

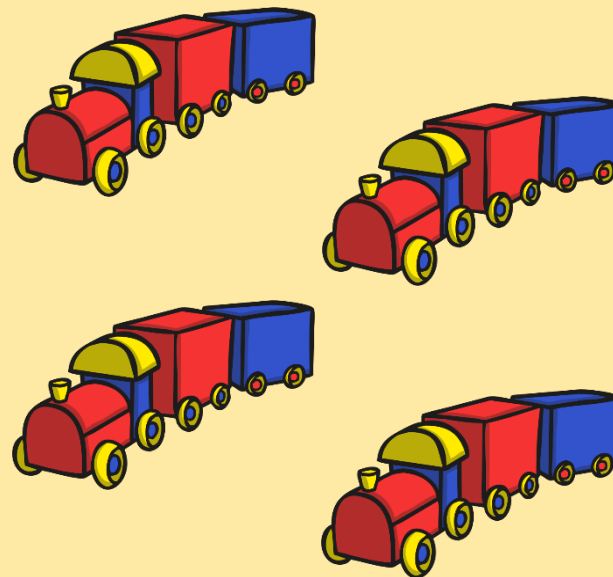
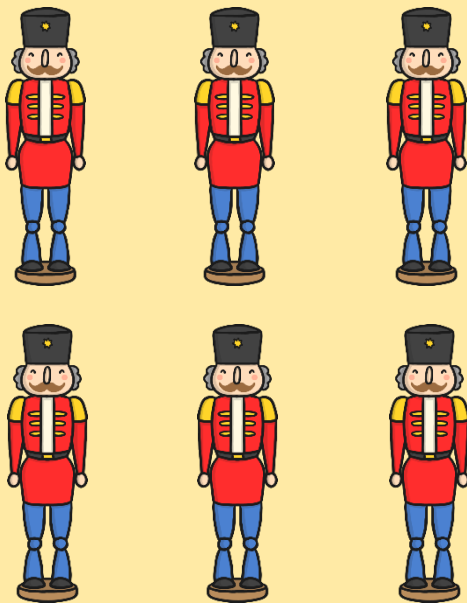
Your grown up will read out the
question.

Remember to listen carefully and
point to the correct set.

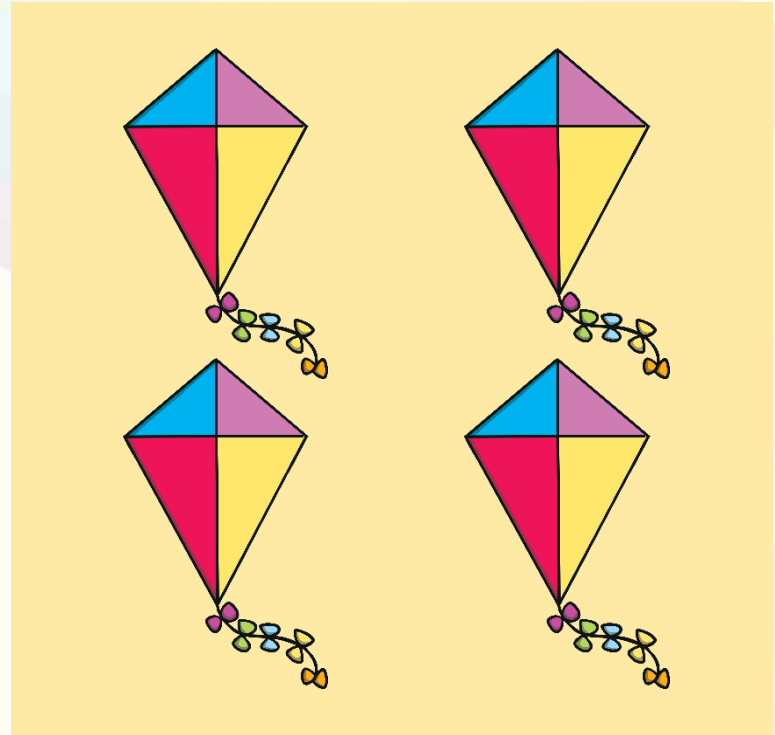
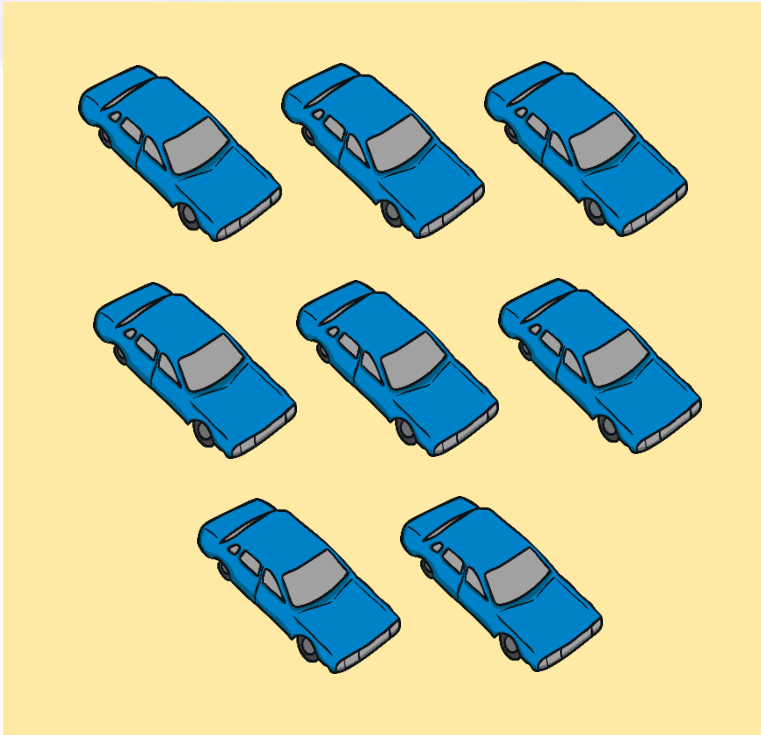
Which set contains **more** toys?



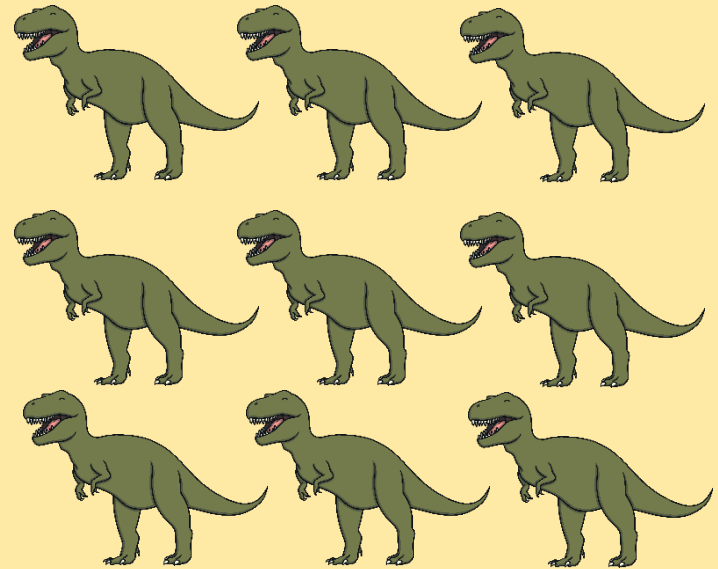
Which set contains **fewer** toys?



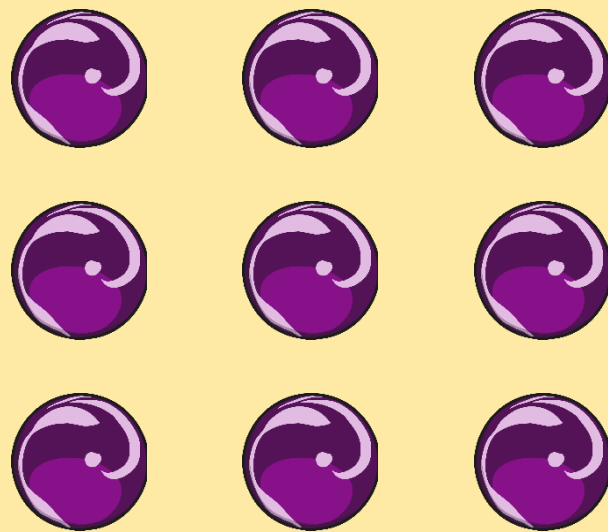
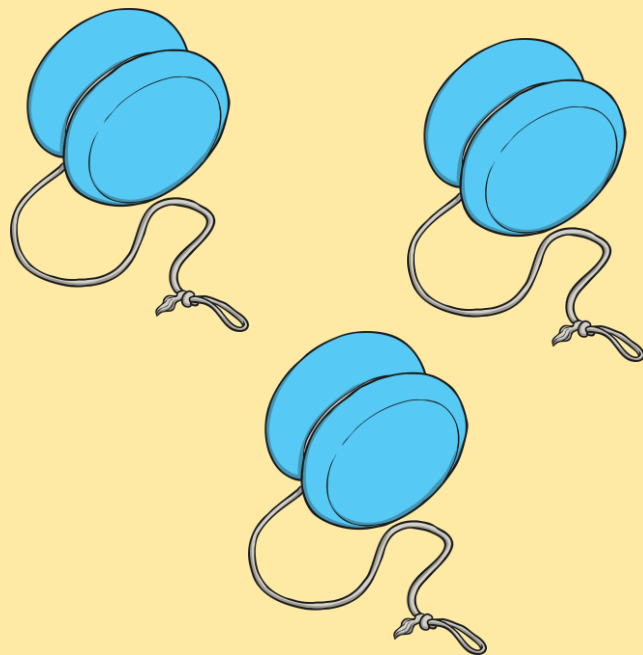
Which set contains **more** toys?



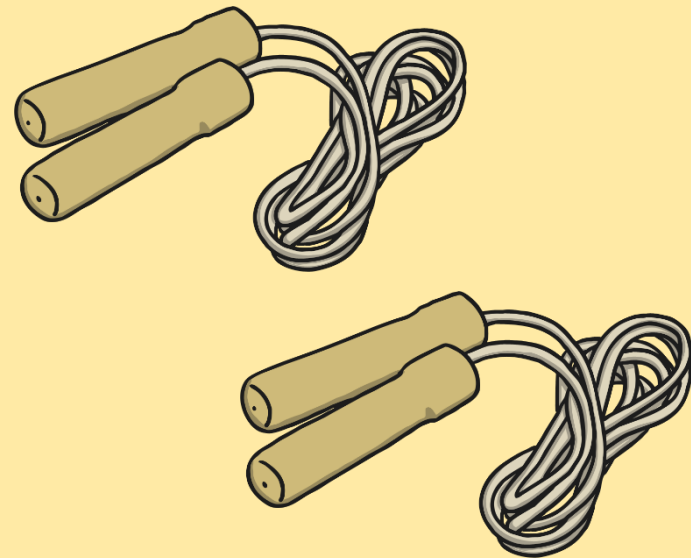
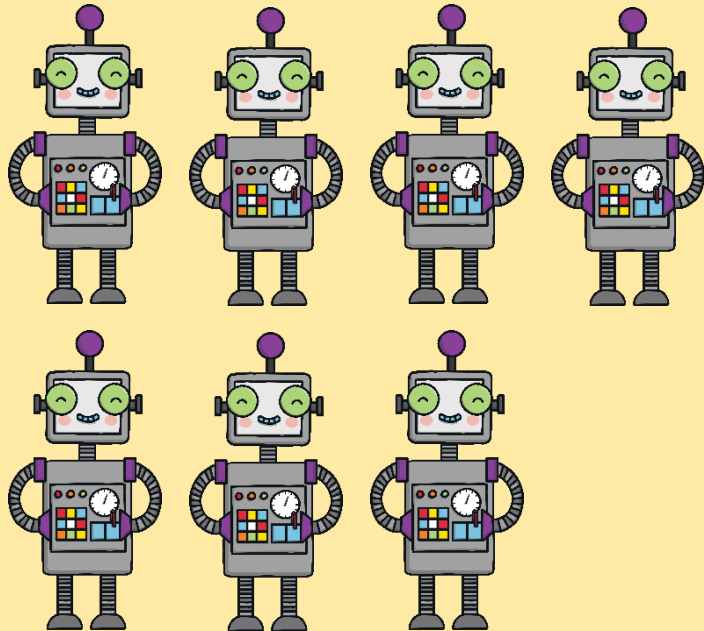
Which set contains **more** toys?



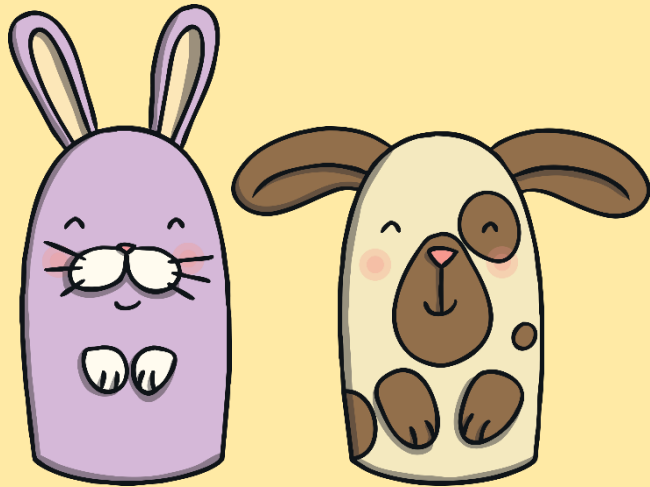
Which set contains **fewer** toys?



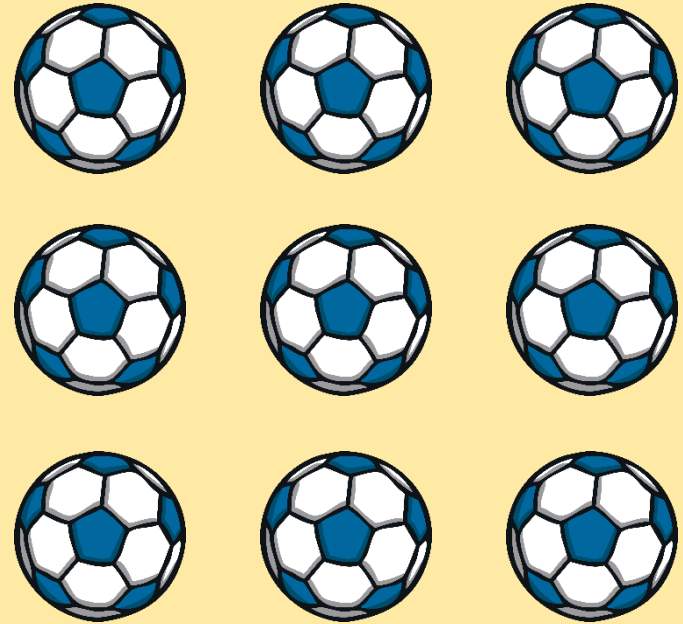
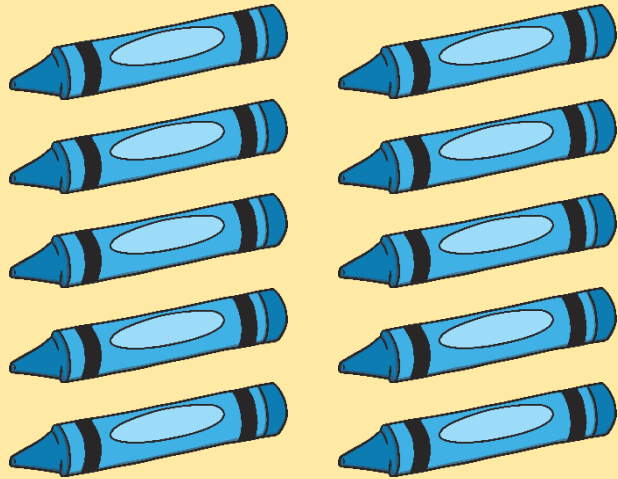
Which set contains **fewer** toys?



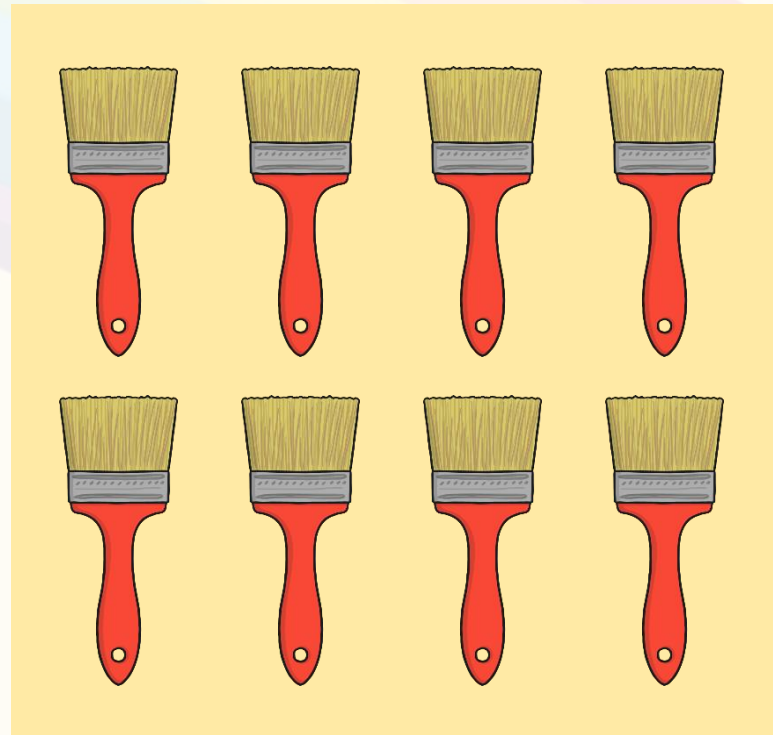
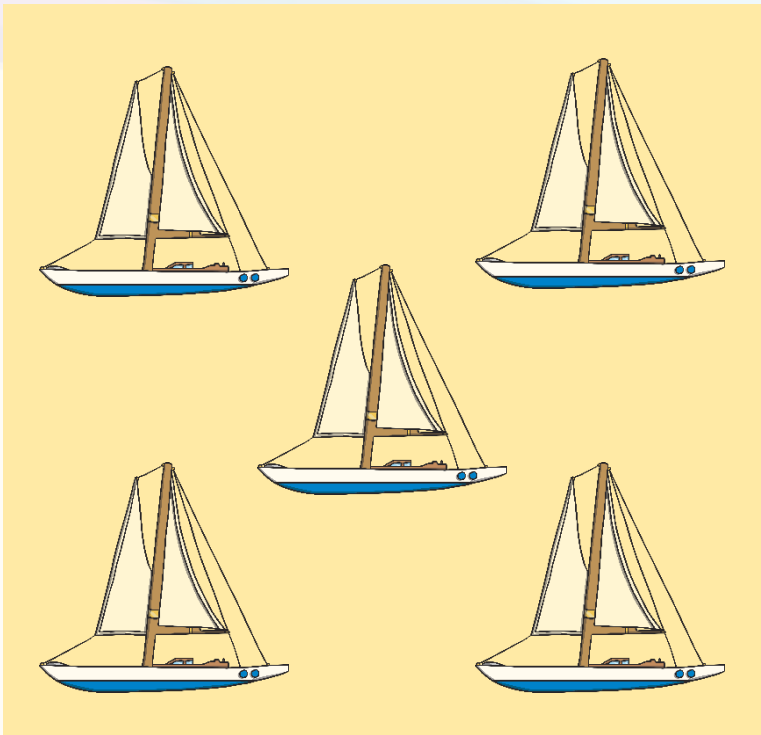
Which set contains **more** toys?



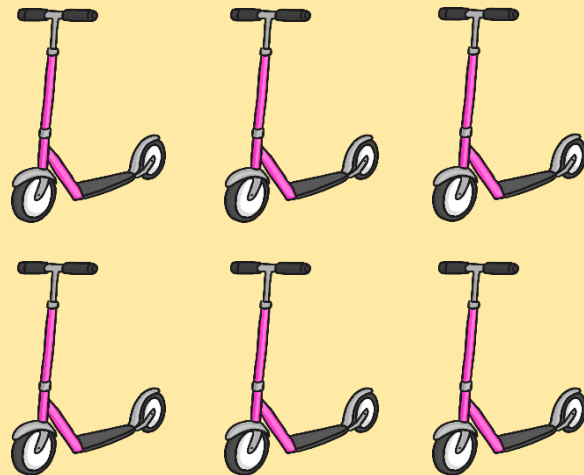
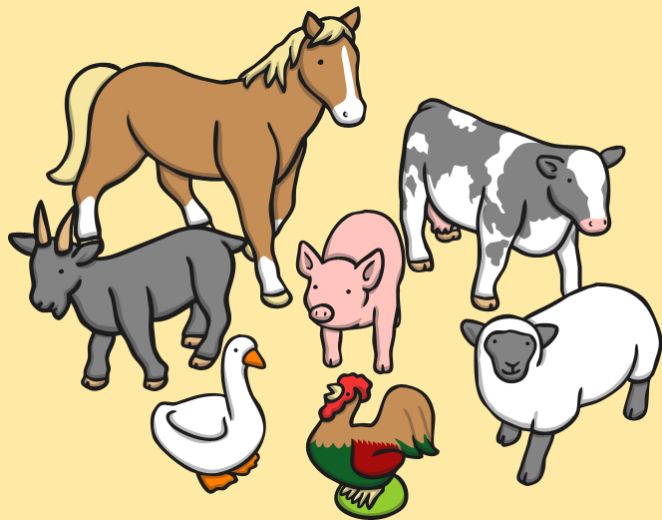
Which set contains **more** toys?



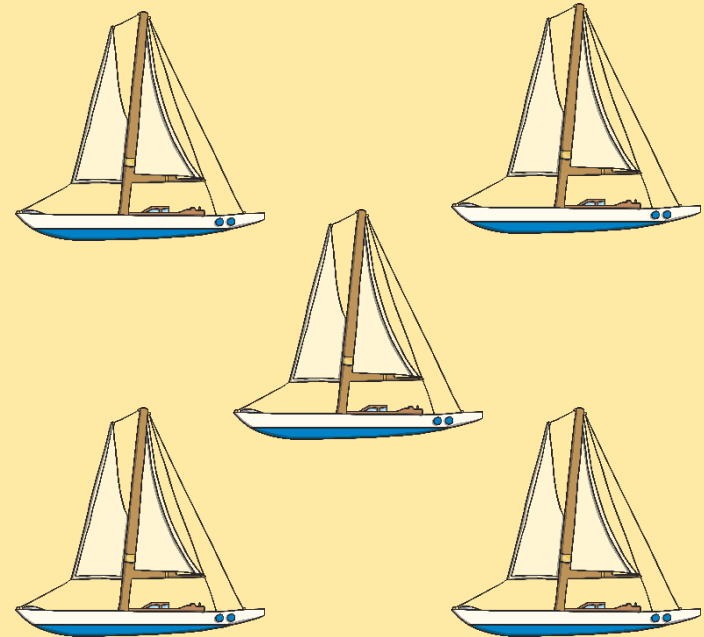
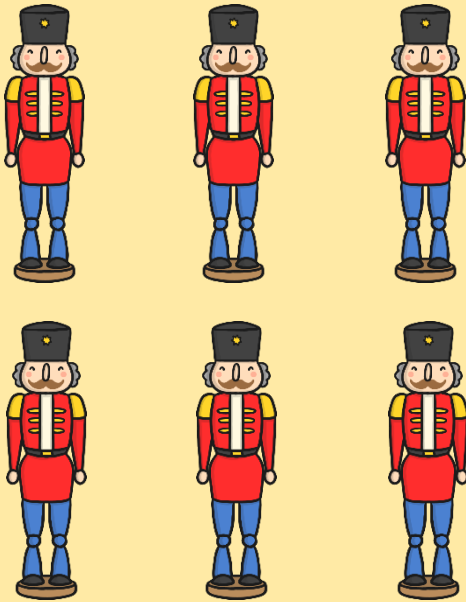
Which set contains **fewer** toys?



Which set contains **fewer** toys?

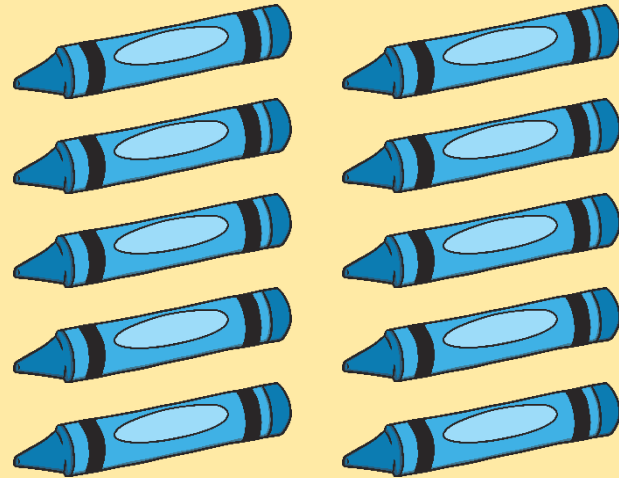
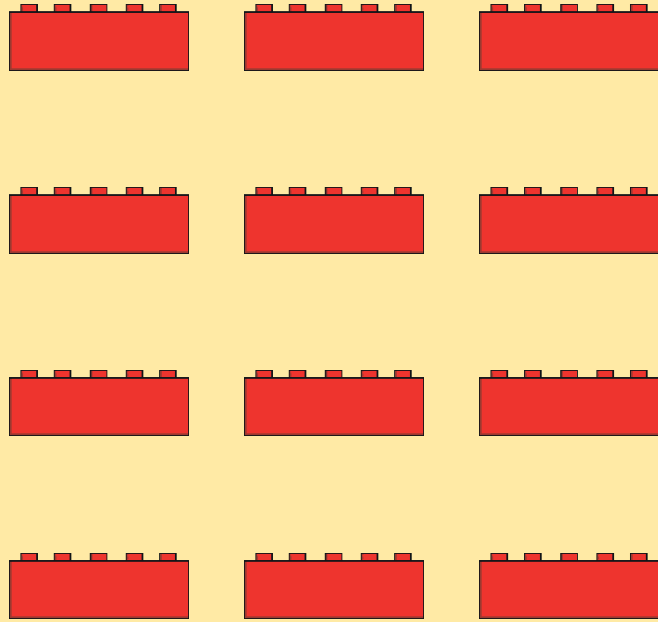


Can you say two sentences to compare the sets of toys using the words **more** and **fewer**?



Tell someone in your family your sentences.
Try starting one sentence, 'There are **more...**' and the other sentence with 'There are **fewer...**'.

Can you say two sentences to compare the sets of toys using the words **more** and **fewer**?



Tell someone in your family your sentences.
Try starting one sentence 'There are **more...**' and the other sentence with 'There are **fewer...**'.

The End



**Well done – super
comparing!**



twinkl