

# Sorting Sounds



s



a

t



p

i

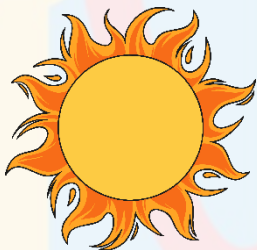
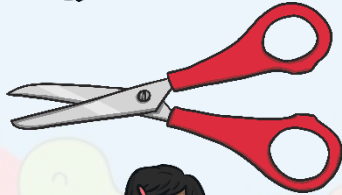


n

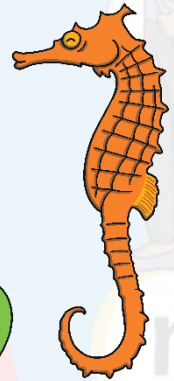
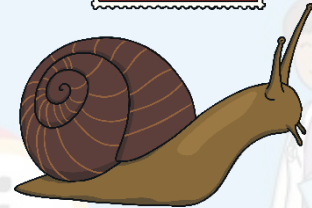


twinkl

Click the pictures that begin with 's' to move them into the middle.



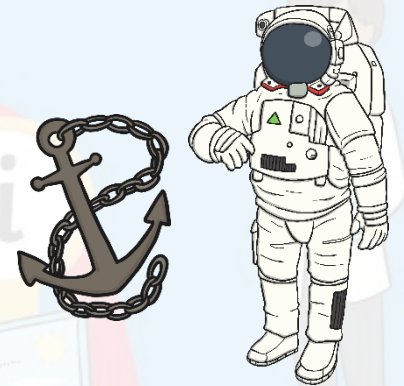
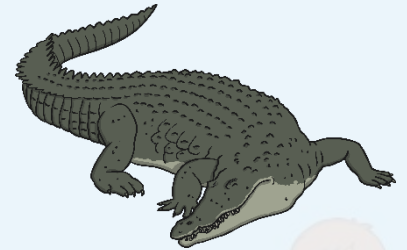
S



Click the pictures that begin with 'a' to move them into the middle.

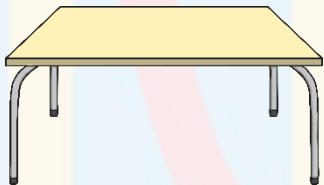


a



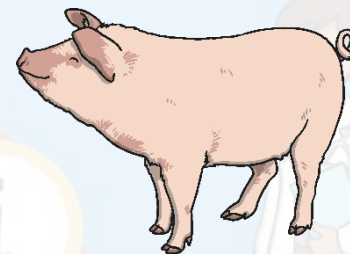
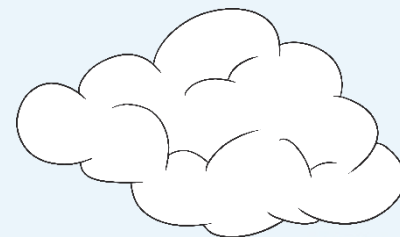
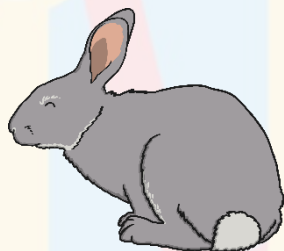
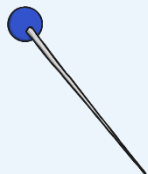
Click the pictures that begin with 't' to move them into the middle.

t



Click the pictures that begin with 'p' to move them into the middle.

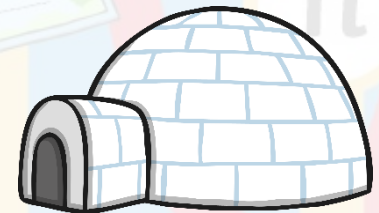
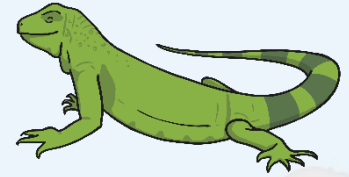
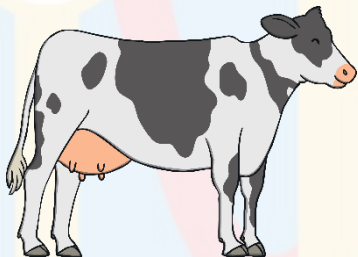
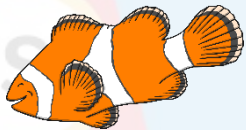
p





Click the pictures that begin with 'i' to move them into the middle.

i

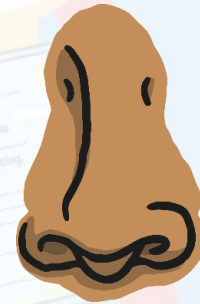


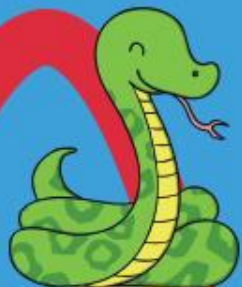
Click the pictures that begin with 'n' to move them into the middle.

n



9





s



a



t

twinkl



p



i



n