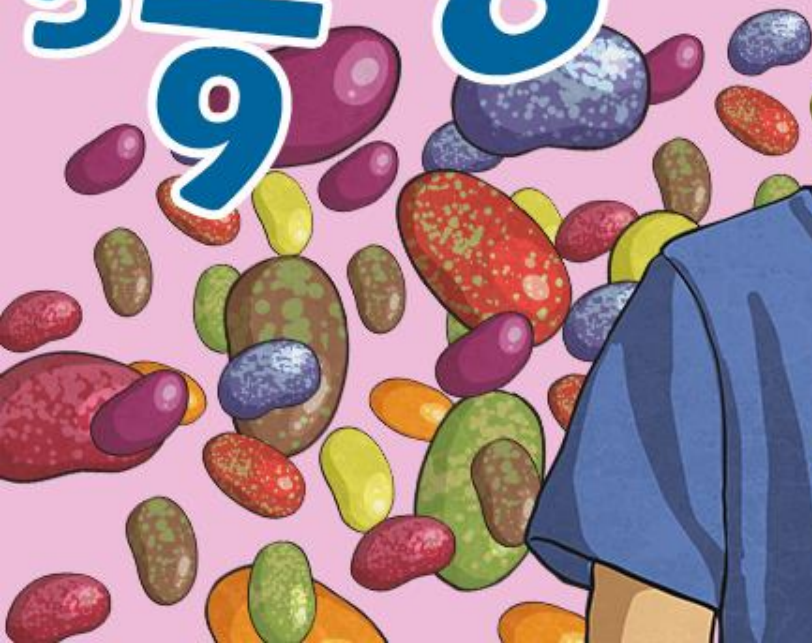




# Probability Quiz

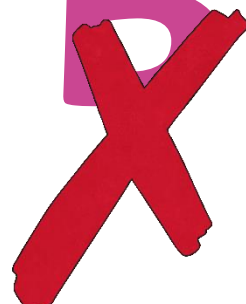
$\frac{3}{5}$   $\frac{7}{9}$   $\frac{1}{8}$   $\frac{2}{3}$




**Something that is unlikely has a probability of...**

**A**  


**Between  
1 and 2**

**B**  


**Between  
0.5 and 1**

**C**  


**Between  
0 and 0.5**



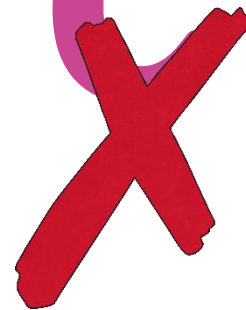
**Something that is likely has a probability of...**

**A**  


**Between  
1 and 2**

**B**  


**Between  
0.5 and 1**

**C**  


**Between  
0 and 0.5**

What is the probability of rolling a 2 with a dice?

**A** ✓  
 $\frac{1}{6}$

**B** ✗  
 $\frac{1}{3}$

**C** ✗  
 $\frac{1}{4}$

What is the probability of getting tails when tossing a coin?

~~A~~  
1

B ✓  
0.5

~~C~~  
0.25

What is the probability of rolling an odd number with a dice?

~~A~~  
 $\frac{1}{3}$

B  
✓  
 $\frac{1}{2}$

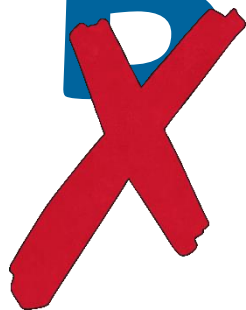
~~C~~  
 $\frac{1}{4}$




**A coin is flipped 5 times.  
It lands on heads three times and tails twice.  
What is the probability it will land on tails with the  
next throw?**

**A**  


**0.5**

**B**  


**1**

**C**  


**0**

A packet contains 5 sweets.  
3 of the sweets are red.  
What is the probability of picking a red sweet from the packet?

**A** ✓  
 $\frac{3}{5}$

**B** ✗  
 $\frac{2}{5}$

**C** ✗  
 $\frac{1}{5}$



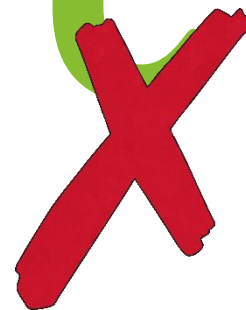
**If something has an even chance of happening,  
what is its probability?**

**A**  


**100%**

**B**  


**50%**

**C**  


**0%**

**A bag contains just 7 toffees.  
What is the probability of picking a chocolate  
button from the bag?**

**A**  


**0**

**B**  


**0.5**

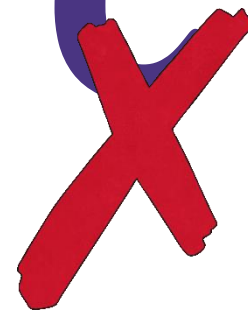
**C**  


**1**

**A bag contains 4 strawberry laces.  
How many apple flavoured laces must be added so  
there is an even chance of picking a strawberry lace?**

**A**  
  
**8**

**B**  
  
**4**

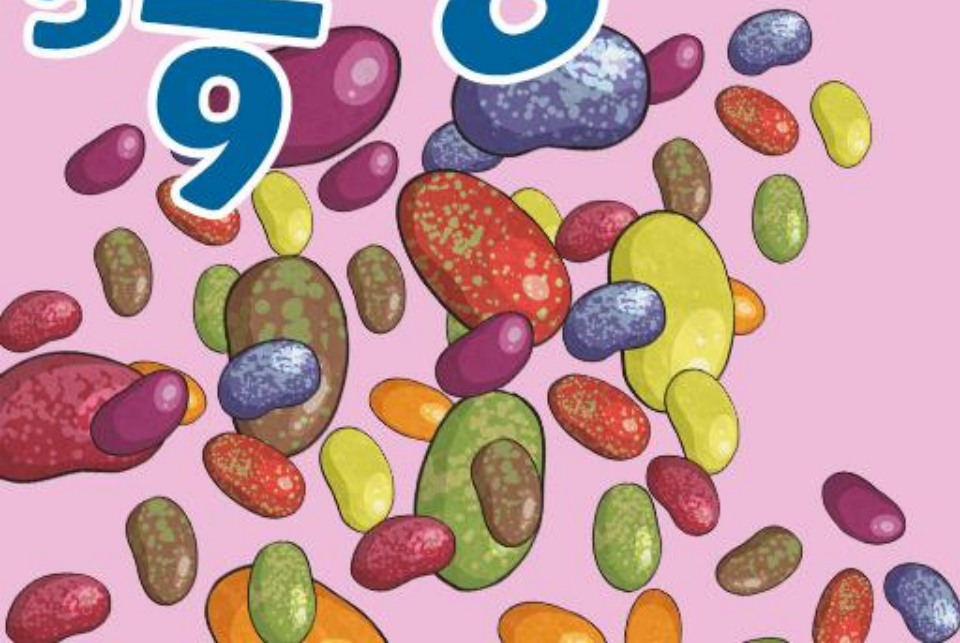
**C**  
  
**0**





$\frac{3}{5}$   $\frac{7}{9}$   $1\frac{1}{8}$   $\frac{2}{3}$

twinkl



$\frac{3}{5}$   $\frac{7}{9}$   $1\frac{1}{8}$

